



9 MAJOR PHYLA OF THE ANIMAL KINGDOM



Phylum: PORIFERA

- SPONGES
- Contain “pores”
- NO symmetry



Phylum: CNIDARIA

- Jellyfish, Sea Anemones
- CNID- = "to sting"
- Radial Symmetry



Phylum: PLATYHELMINTHES

- Planarian, Tapeworm, Fluke
- PLATY- "flat"
- Bilateral Symmetry



Phylum: NEMATODA

- Roundworms
- Hookworm, Pinworm



Phylum: ANNELIDA

- Segmented Worms
- Earthworms, Leeches



Phylum: Mollusca

Class: GASTROPODA

- Snails
- Slugs



Class: BIVALVES

- Oysters
- Clams








Class: CEPHALOPODA

- Octopus
- Squid

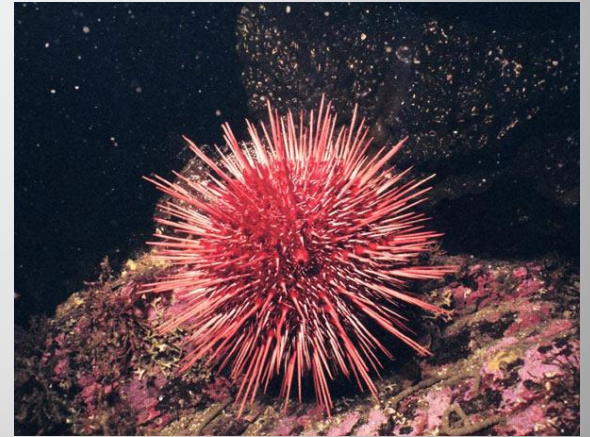


Phylum: ARTHROPODA

Class: CRUSTACEANS	Class: ARACHNIDS	Class: CENTIPEDES	Class: MILLIPEDES	Class: INSECTS
<ul style="list-style-type: none">•Lobster•Shrimp•Crabs 	<ul style="list-style-type: none">•Spiders•Ticks•Scorpions 	<p>Centi- = 100 * not quite that many segments</p> 	<p>Milli- = 1000 * not quite that many segments</p> 	<ul style="list-style-type: none">•Flies•Caterpillars•Bees 

Phylum: ECHINODERMATA

- Echino + Derm = "spiny" + "skin"
- Sea Stars, Sea Urchins
- Radial Symmetry



Phylum: CHORDATA

Class: Jawless Fish

- Hagfish
- Lampreys



Class: Cartilaginous Fish

- Sharks
- Rays
- Skates



Class: Bony Fish

- Trout
- Tuna
- Goldfish



Phylum: CHORDATA

Class: AMPHIBIA

- Amphib- means "double life"
- Frogs, Toads, Salamanders



Phylum: CHORDATA

Class: REPTILIA

- Snakes, Lizards, Turtles, Alligators



Phylum: CHORDATA

Class: AVES

- Contains the only true-flying organisms
- Not all fly



Phylum: CHORDATA

Class: MAMMALIA

Order: Monotremes

- Egg-laying
- Duck-Billed Platypus



Order: Marsupials

- Pouch-living young
- Koalas, Kangaroos



Order: Placental Mammals

- Offspring develop internally with help of a placenta

