

2016 Test Review: Circulatory System

Study your objectives on page 2 of your Chapter 16 packet. The following is a list vocabulary to focus on. *TEST information may be taken from the notes, packet pages, textbook, etc..

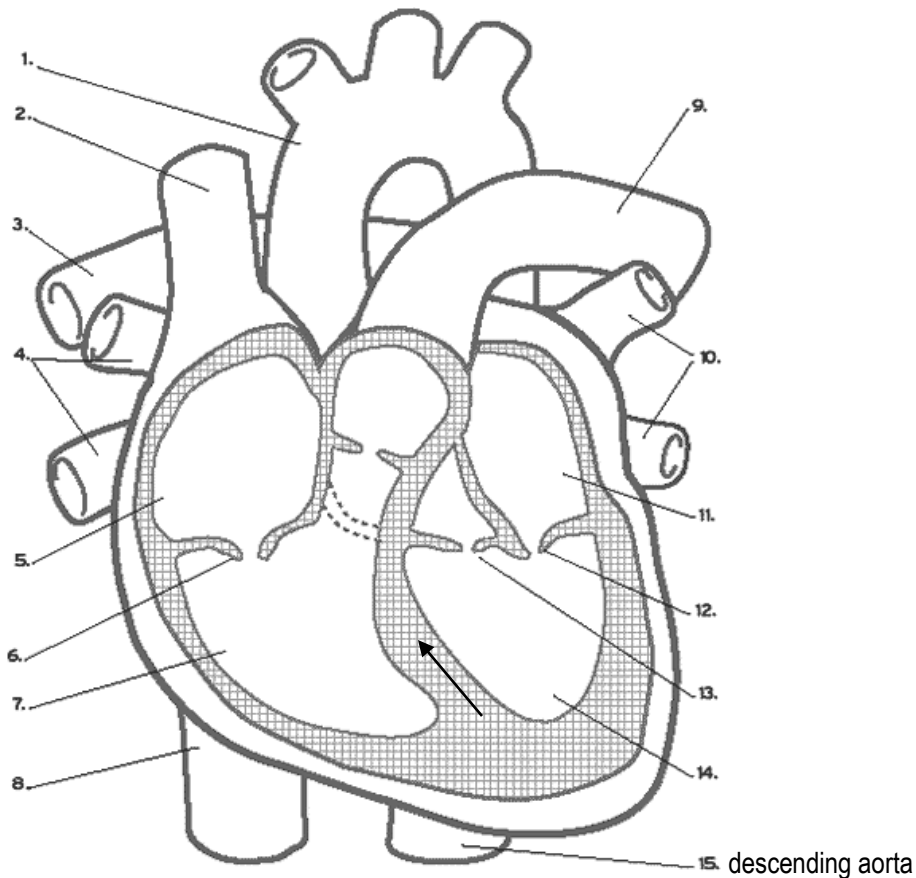
Vocabulary

Involuntary	Systolic	Cholesterol
Striated/ Branched	Diastolic	Stroke
Arteries	Oxygenated	Heart disease
Veins	Carbon Dioxide	
Capillaries	Valves	
Blood Pressure	Pacemaker	
Deoxygenated	Pulse	Diffusion
Plasma	Hemoglobin	Blood Types (donor/ recipient chart)
Red Blood Cells	Iron	Resting Heart Rate
White Blood Cells	Red Marrow	4 Functions of the Circulatory System
Platelets	Antigens	
Fibrin		

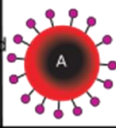
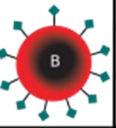
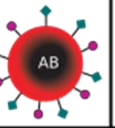
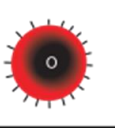
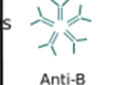


Heart Parts

*Be able to define, label, and trace pathway through which blood travels through the heart.

Aorta	Left Ventricle	Cardiac Muscle
Pulmonary Artery	Right Ventricle	Tricuspid Valve
Pulmonary Vein	Septum	Bicuspid Valve
Left Atrium	Superior Vena Cava	AV Valve
Right Atrium	Inferior Vena Cava	Pulmonary Valve



Review the Blood Typing Chart then answer the true/ false questions below:

	Group A	Group B	Group AB	Group O
Red blood cell type				
Antibodies present	 Anti-B	 Anti-A	None	 Anti-A and Anti-B
Antigens present	A antigen	B antigen	A and B antigens	None

TRUES/FALSE:

1. A person with type A blood can give blood to a person with type O blood. _____
2. A person with type O blood can give blood to a person with type A blood. _____
3. A person with type AB blood can give blood to a person with type B blood. _____
4. A person with type B blood can give blood to a person with type AB blood. _____
5. A person with type A blood can give blood to a person with type AB blood. _____
6. A person that is positive (+) for Rh factor can give blood to a person that is negative (-). _____
7. What determines blood type? _____

Name the blood vessel being described below:

Choose (A) for arteries, (B) for veins, and (C) for capillaries.

8. carry blood to the heart _____
9. carry blood away from the heart _____
10. allow oxygen to diffuse into cells _____
11. carry blood away from capillaries _____
12. blood vessels with the thickest walls _____
13. smallest blood vessels _____
14. blood vessels with valves _____
15. vessels with much muscle in the walls _____
16. most common blood vessel _____
17. blood vessels with the highest pressure _____
18. blood vessels leading into the right atrium _____
19. blood vessels leaving the right ventricle _____
20. blood vessels that are only one cell thick _____

Use the diagram to match the information below. The 1st

Is done for you.

21. cell fragment - **platelets**
22. mature cell has no nucleus
23. carries hemoglobin
24. transports oxygen
25. promotes blood clotting with fibrin
26. produces fibrin
27. destroys antigens (germs)
28. determines blood type
29. Lives 120 days
30. remembers diseases

