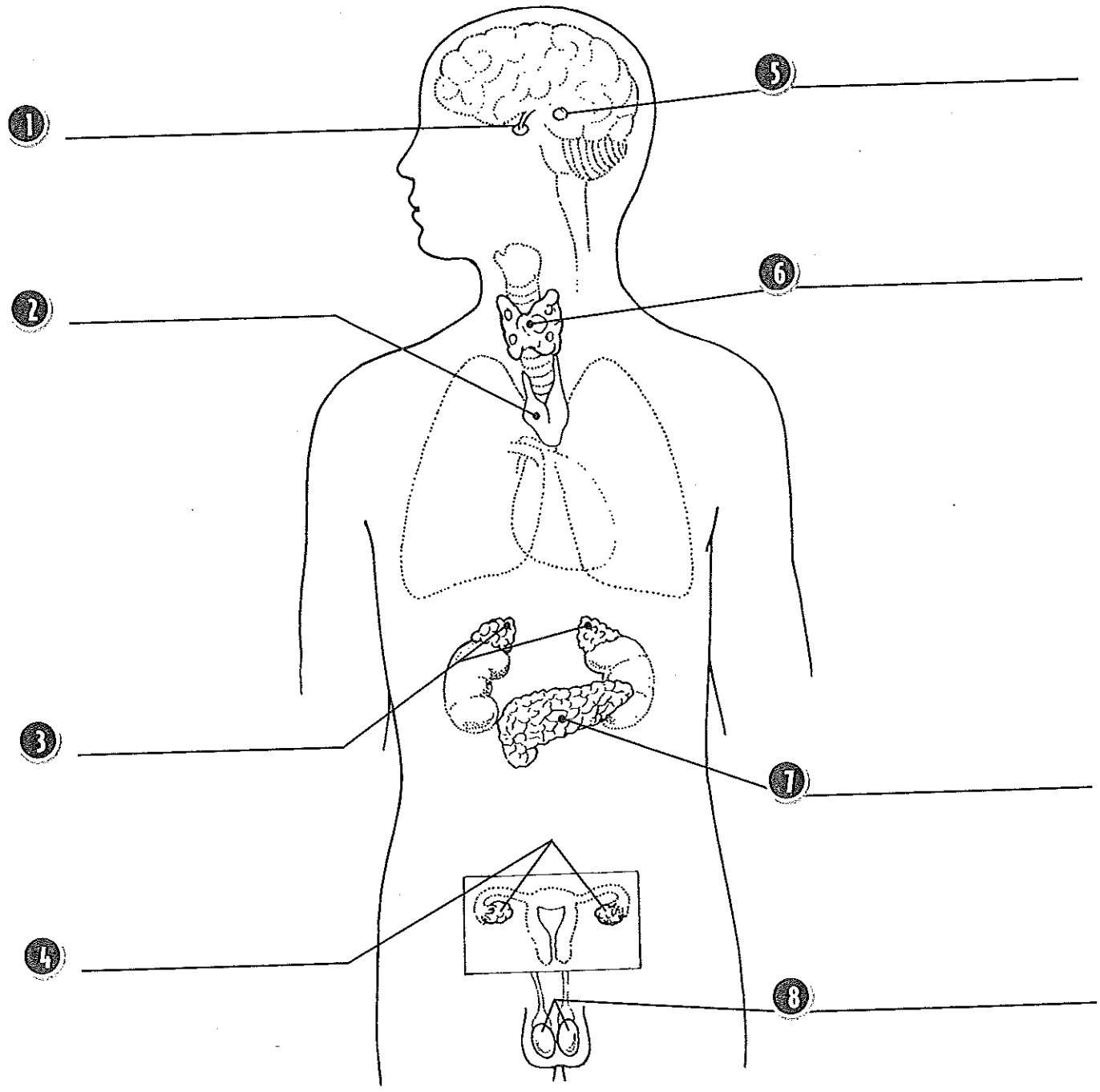


The Endocrine System

The endocrine system includes organs or glands in the human body that are responsible for the control of various functions. Use the terms in the word box to label the diagram.

- | | | | |
|-----------------------------------|---------------------------------|---------------------------|-------------------------|
| thyroid gland
ovaries (female) | pineal gland
pituitary gland | adrenal gland
pancreas | testes (male)
thymus |
|-----------------------------------|---------------------------------|---------------------------|-------------------------|



A Particular Gland for a Particular Function

Each gland in the endocrine system produces a hormone. Hormones are the body's chemical messengers. When hormones are released, they tell other parts of the body to do a specific job. Match each term in the word box to the function it names.

- | | | | | |
|--------------------|-----------------------|-----------------------|-------------------------|--------|
| thyroid
ovaries | pituitary
pancreas | parathyroid
testes | adrenal
pineal gland | thymus |
|--------------------|-----------------------|-----------------------|-------------------------|--------|

- 1 _____ The body's master gland, it controls growth of the body and the function of other glands.
- 2 _____ It controls how the body uses glucose, or sugar.
- 3 _____ These glands produce male characteristics and start male bodily functions.
- 4 _____ These control kidney function and increase blood pressure and heart rate during times of stress.
- 5 _____ It regulates growth and metabolism.
- 6 _____ These produce female characteristics and start female bodily functions.
- 7 _____ These glands regulate the amount of calcium in your blood.
- 8 _____ It produces melatonin, which regulates when we sleep and wake.
- 9 _____ It helps the body recognize and reject germs.

