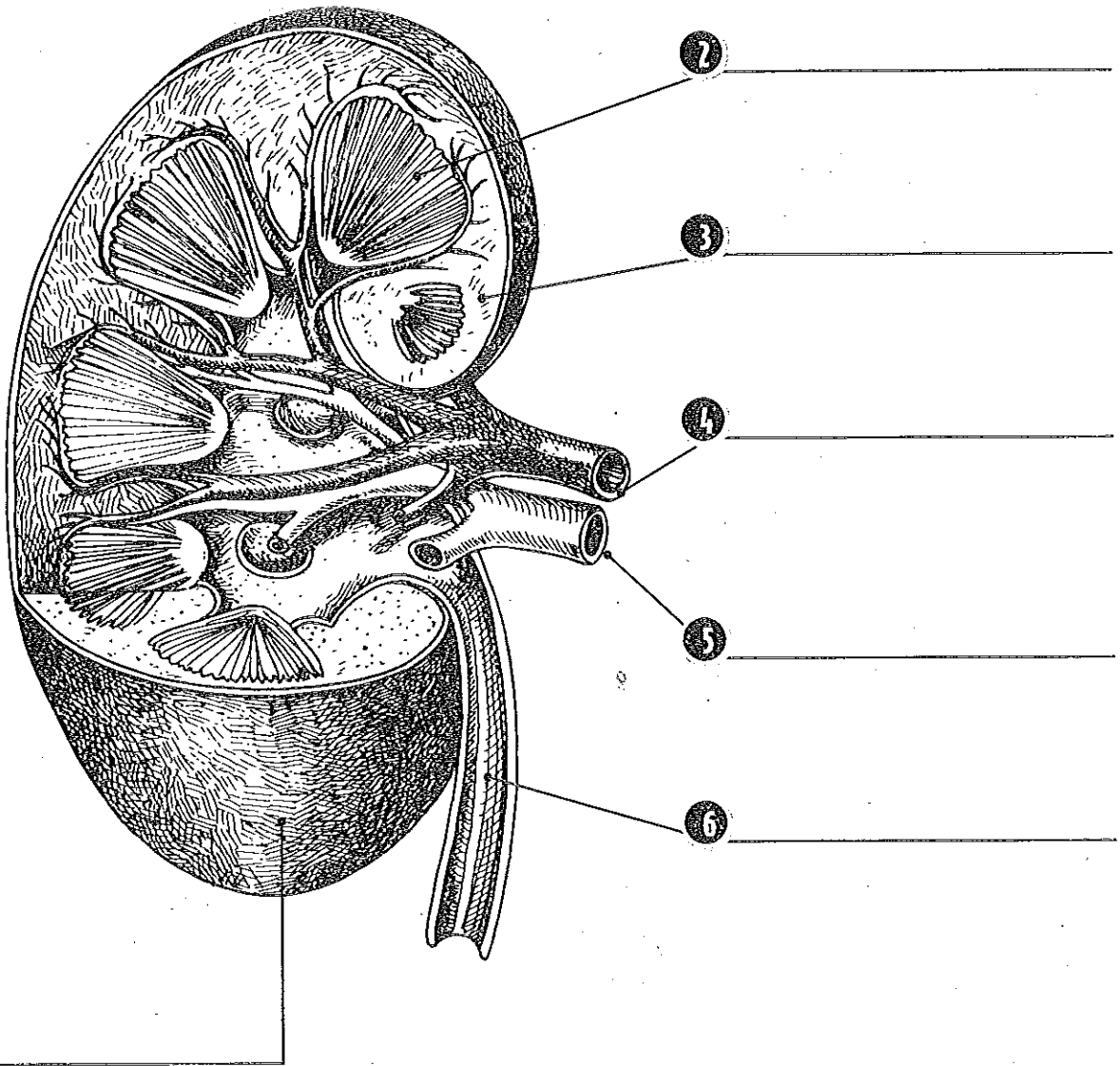


# Two of a Kind

The kidneys are organs that filter water, minerals, organic wastes, and other waste substances out of the blood. The human body contains two kidneys. These bean-shaped organs are about as big as a fist. Use the terms in the word box to label the diagram.

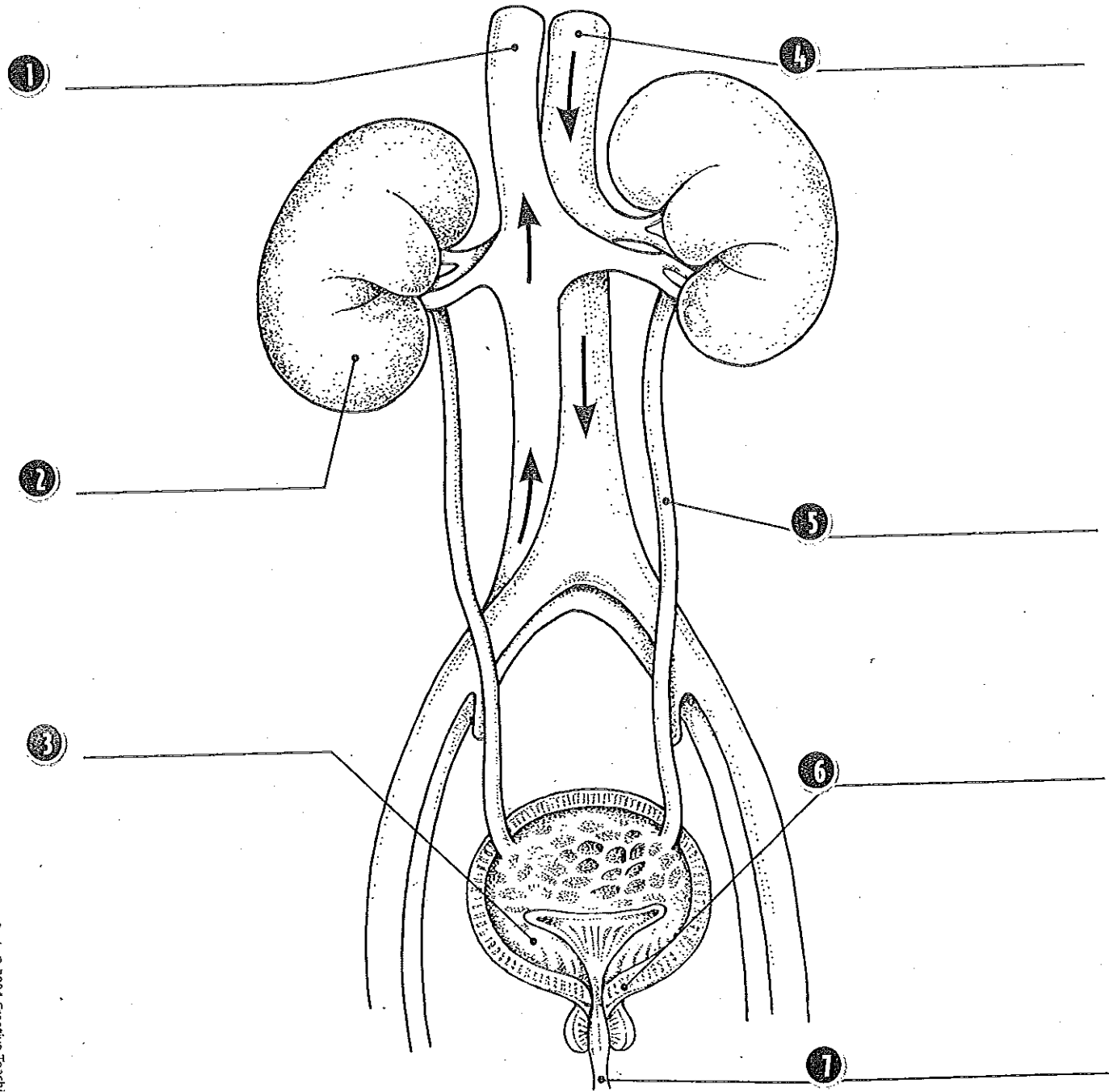
renal artery    renal vein    ureter    renal capsule    kidney medulla    kidney cortex



# The Urinary System

The human body needs water to survive. The urinary system makes sure the body does not have too much or too little fluid at any given time. Use the terms in the word box to label the diagram.

vein    kidney    muscle    bladder    ureter    urethra    artery



# Maintaining a Balance of Fluids

Humans continually gain and lose water and dissolved substances called solutes. The urinary system maintains the proper level of fluid and solutes in the body at all times. Match each term in the word box to its description.

interstitial fluid  
kidney stones

urine  
dialysis

extracellular fluid  
thirst behavior

hypertension  
blood

1

\_\_\_\_\_ When the amount of fluid in the blood drops and the level of solutes rises, this response is triggered to seek out water.

2

\_\_\_\_\_ A fluid that transports substances to and from all tissues by way of the circulatory system.

3

\_\_\_\_\_ A fluid formed when the kidneys filter water and solutes from the blood. The excess water and solutes remains as this fluid.

4

\_\_\_\_\_ The fluid that is found in the spaces between cells and tissues.

5

\_\_\_\_\_ Hard deposits of uric acid, calcium salts, and other wastes that can become lodged in the ureter or urethra and block urine flow.

6

\_\_\_\_\_ All of the fluid not inside cells, it includes plasma and interstitial fluid.

7

\_\_\_\_\_ The filtering of fluids with a machine to remove and add solutes in proper concentration. This process is used when kidneys fail to function on their own.

8

\_\_\_\_\_ Abnormally high blood pressure that can happen when the amount of sodium in the body becomes too great.